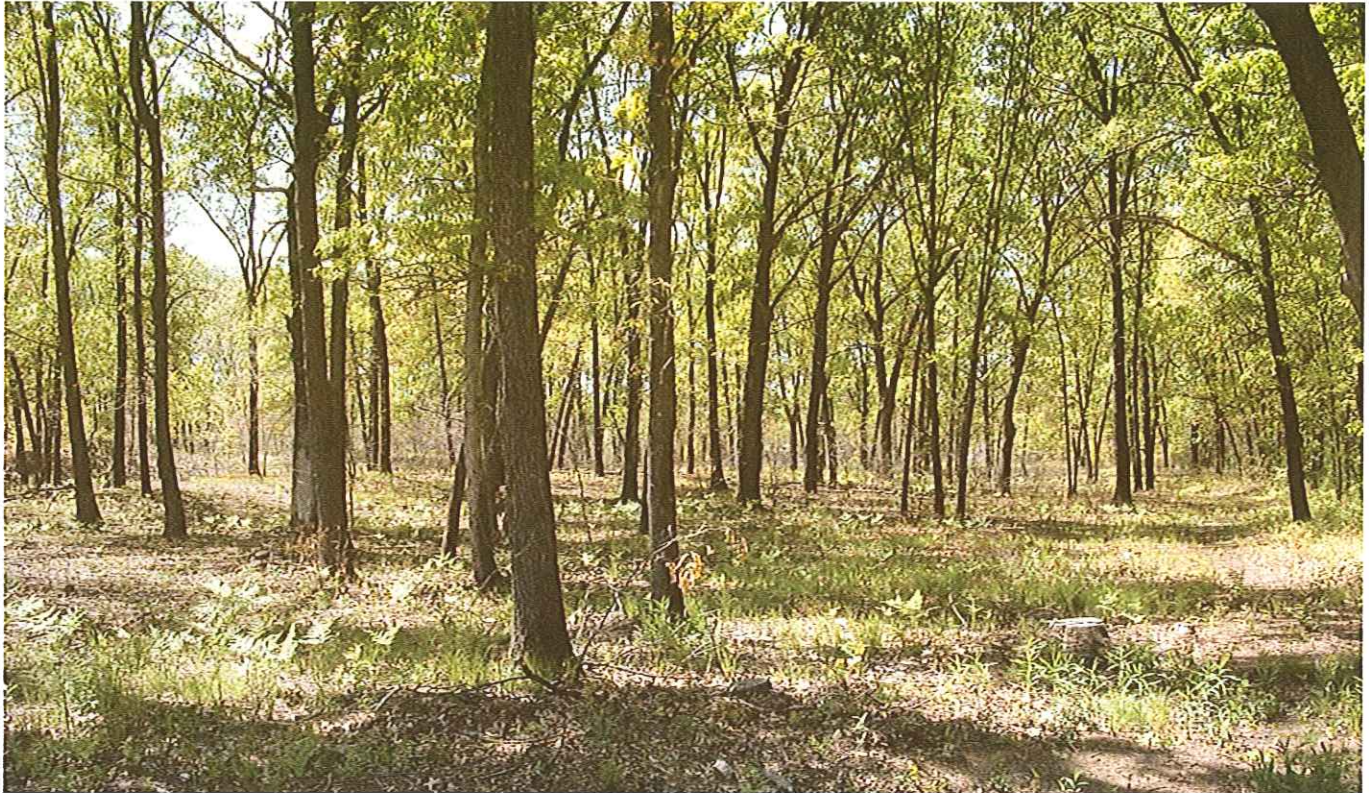


LAKE ERIE CREP – REVISED OCTOBER 2006
Rare and Declining Habitat –Oak Savanna
Practice Code CP25



Payment Rate

225% Base CRP Rental Rate

State ODNR Bonus Payment

15 Year Extension - \$500 per Acre
DOW Wetland Restoration Incentive -\$500/Acre
Tree Planting Bonus - \$100 per Acre
DOW Warm Season Grass Incentive - \$20/Acre

Payment Duration

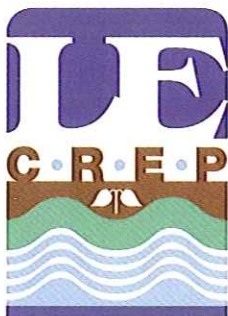
15 Years

Contract Duration

15/30 Years (30 years with ODNR and/or DOW Extension)

Type of Cover

Native Trees, Grasses and Forbs



ODNR, SWCDs & USDA
helping landowners protect the region's water resources!

USDA IS AN EQUAL OPPORTUNITY PROVIDER AND EMPLOYER



LAKE ERIE CREP – REVISED OCTOBER 2006

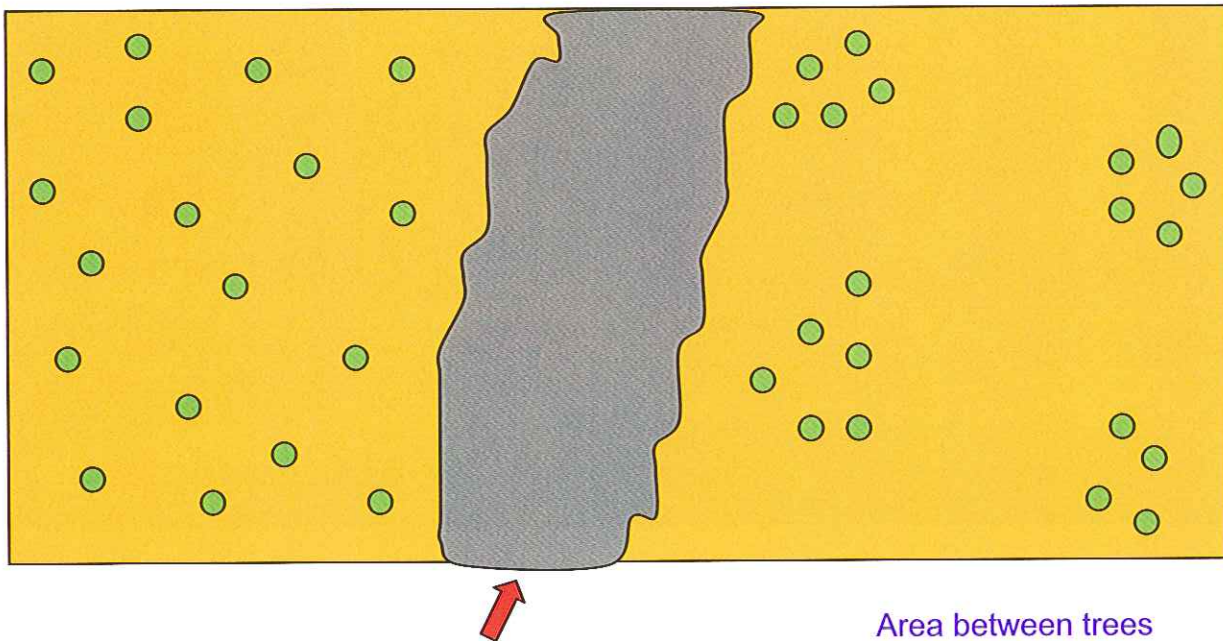
RARE AND DECLINING HABITAT – CP25 Oak Savanna

Schematic of Practice Requirements

Trees may be planted at wide spacing throughout the area

OR

Trees may be planted in widely spaced clumps



If hydric soils are present, wetland hydrology may be restored by blocking drainage

Area between trees established to appropriate grass-forb mix.

Practice Requirements

- Location** Area enrolled must be eligible cropland. Enrolled area must be in Lucas, Fulton or Henry County. Enrolled area must have appropriate soils and topography for establishment of Oak Savanna. Generally these areas are on sandy beach ridges and dunes. The area enrolled is not limited to riparian areas.
- Size** There is no maximum size for this practice; the minimum area that can be enrolled is 0.1 acre.
- Vegetation** Vegetation shall be appropriate native trees, grasses and wildflowers. Appropriate species are found in practice 643 specifications. If available, the use of Oak Openings genotypes is preferred.
- Hydrology Restoration** If drained hydric soils are present, the landowner may restore the hydrology if they desire. Hydrology restoration will be limited to blocking surface or subsurface drains.
- Practice Spec** Practice and vegetation shall conform to NRCS Technical Guide Specification #643, Restoration and Management of Declining Habitats.