

ANNUAL REPORT

Fulton County, Ohio
Est. 1850

2010

A YEAR IN REVIEW



FULTON COUNTY
Viam Inveniam Aut Faciam
(I will find a way or I will make one)



What's Inside

Index

Financial Activity snapshot

Senior Center

Engineer's, Sheriff's, and Coroner's

The Budget at a Glance

Revenues and Expenses

Investment Report

Economic Indicators

Directory

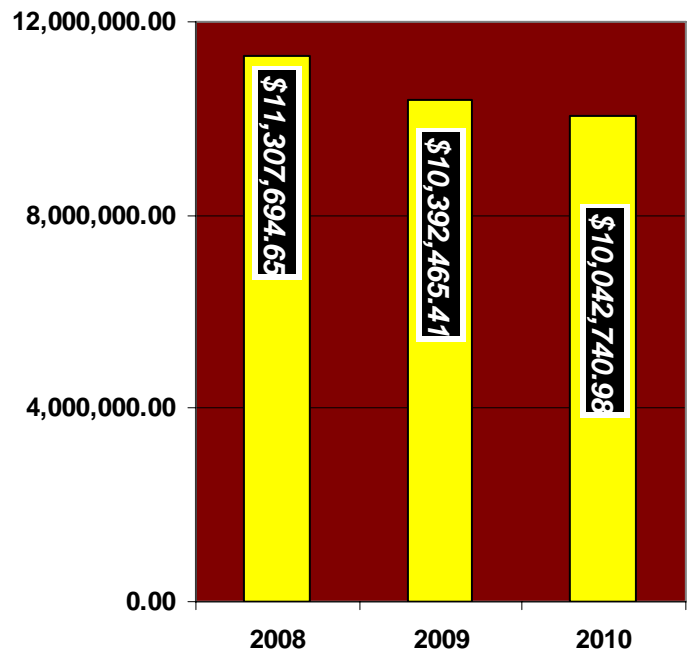
We hear over and over that County Government needs to be run like a private business. We interpret that statement to mean make hard business decisions and reduce the expense side of "the business". In 2010 we continued to reduce the expense side, and hopefully without a reduction of services to you (see chart below). As we look forward we are anticipating continued issues due to the State of Ohio's financial troubles.

Overall, economists are optimistic about the new year. Many forecasters put U.S. economic growth at around 3 percent, but say there will still be areas of weakness. The housing market is expected to continue bumping along the bottom, and the job market won't be much better.

Fulton County's 2010 was hit and miss. County Conveyance fees (real property transfer fee) saw the first increase in six years. Interest income saw a decline for the fourth straight year in a row. The following report are highlights of the year.

We hope you enjoy reviewing this report that outlines your county government at work for you and your neighbors.

**3 YR. EXPENSE HISTORY
GENERAL FUND**



Joe Short



Paul Barnaby



Dean Genter



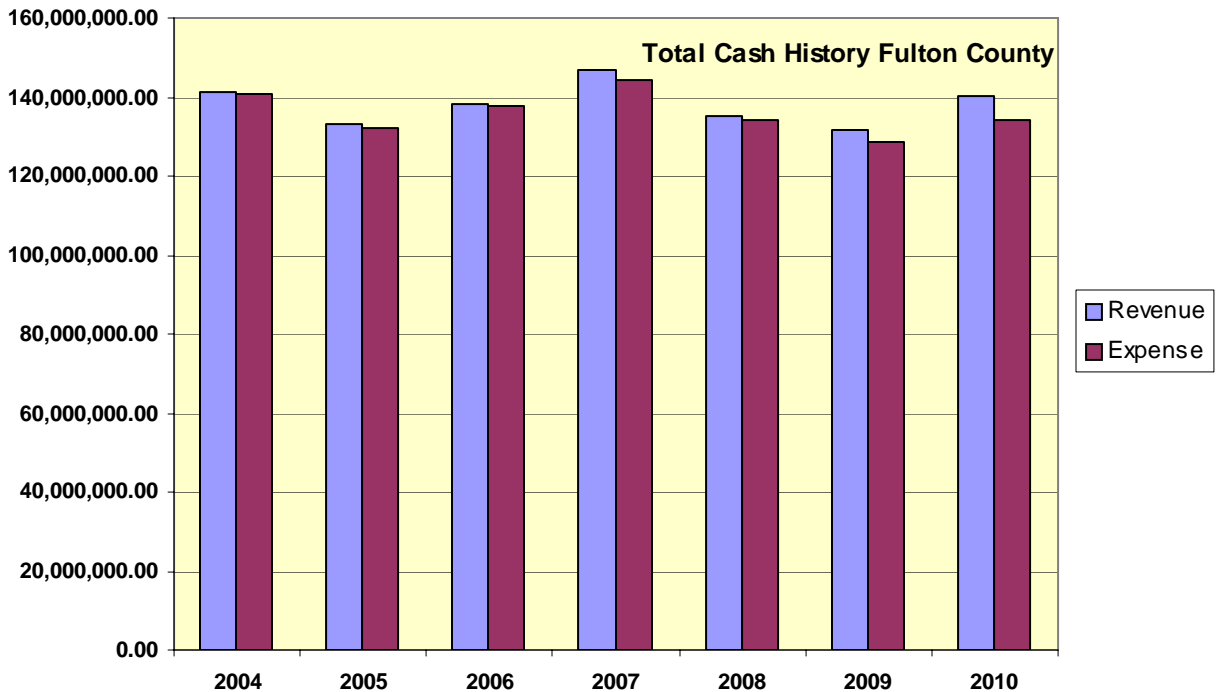
Fulton County Board of Commissioners
Dean Genter, Paul Barnaby, and Joe Short

Financial Activity Statement

Fulton County provides law enforcement, judicial activities, social services, water and sewer services and community and economic development programs. The county budget has eight fund groups which designate money for specific purposes. They are the General Fund, Enterprise, Internal Service, Debt Service, Special Revenue, and Capital Funds. For example, the General Fund is the county's primary operating fund and represents resources that the county may use in any way deemed appropriate by the County Commissioners. This fund is also one of the chief indicators of the county's financial health. The General Fund budget for 2010 was \$10.895 million. Special Revenue Funds have legal restrictions and must be used for a designated purpose. An example would be grant funds received from the federal or state governments such as the Community Development Block Grant Program. Internal Service funds include services which provide support to general operations and which are supported by fees charged to county departments. Enterprise funds include departments which operate almost exclusively on fees charged to the public or customers. Trust and Agency funds are dollars that flow through the county. An example would be your Schools, Libraries and Townships. Below is a breakdown of each funds activity for 2010.

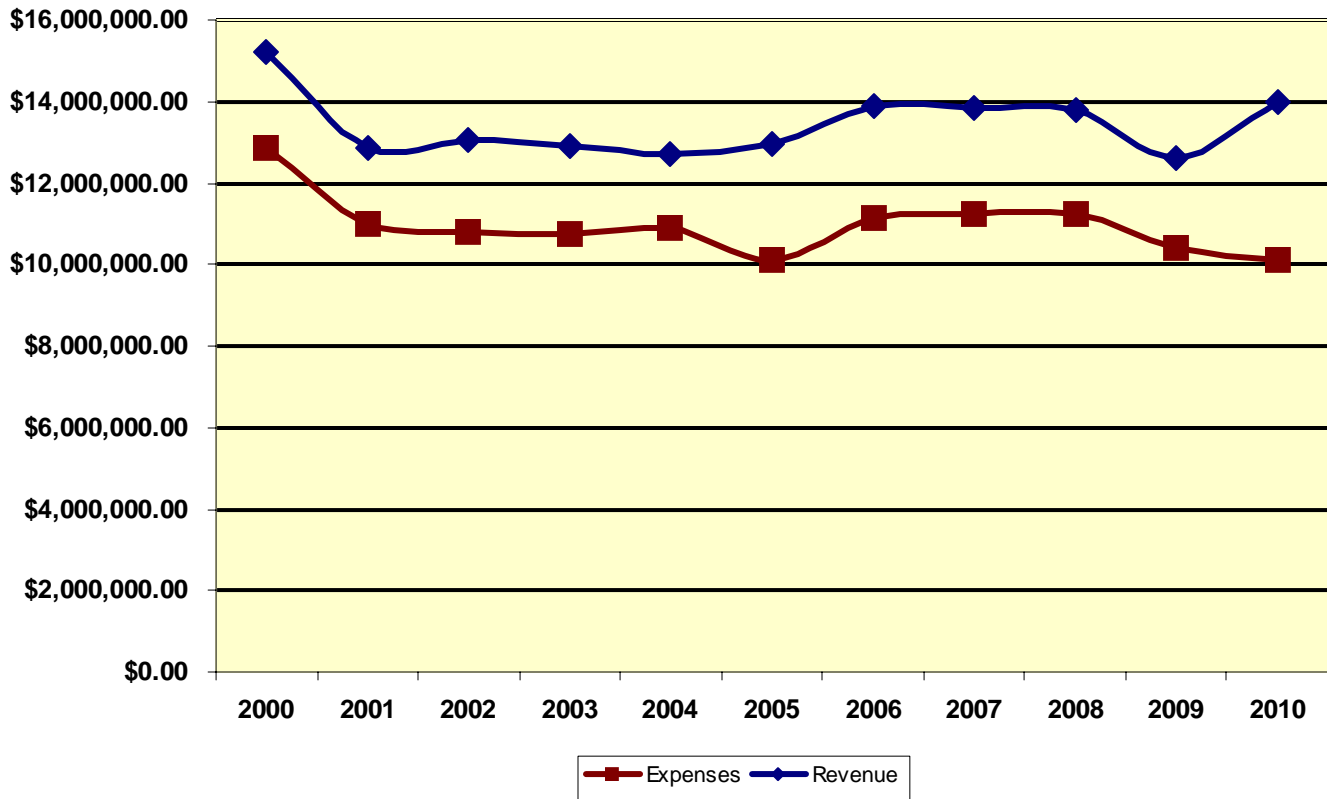
Y-T-D CASH FUND BALANCE YEAR ENDING 12-31-2010

	Y-T-D RECIEPTS	Y-T-D EXPENSES
<u>General Fund</u>	\$11,767,494.17	\$10,090,835.14
<u>Special Revenue Funds</u>	\$24,719,792.27	\$21,071,613.05
<u>Debt Service Funds</u>	\$214,756.39	\$238,007.45
<u>Capital Project Funds</u>	\$1,288,072.69	\$1,465,694.88
<u>Enterprise Project Funds</u>	\$9,257,911.53	\$8,646,873.45
<u>Internal Service Funds</u>	\$261,482.36	\$223,000.12
<u>Trust & Agency Funds</u>	\$86,774,025.86	\$86,716,986.43
<u>Non reporting Funds</u>	\$5,764,149.49	\$5,495,654.31
Totals	\$140,047,684.76	\$133,948,664.83





**General Fund
Revenue and Expense History**



CALENDAR YEAR	GENERAL FUND EXPENSES	CRIMINAL JUSTICE EXPENSES	%of GF
2001	\$10,977,603.07	\$3,870,456.19	35.26%
2002	\$10,819,798.68	\$4,203,284.70	38.85%
2003	\$10,736,618.34	\$4,469,679.57	41.63%
2004	\$10,904,766.13	\$4,714,136.07	43.23%
2005	\$10,124,027.06	\$4,512,299.03	44.57%
2006	\$11,143,303.74	\$4,937,599.03	44.31%
2007	\$11,251,237.60	\$5,042,115.37	44.81%
2008	\$11,307,694.65	\$5,199,358.18	45.98%
2009	\$10,392,465.41	\$5,076,399.97	48.85%
2010	\$10,090,835.14	\$5,106,156.68	50.60%

Fulton County Senior Citizen Services Provided in 2010

Available to All County Residents 60 Years & Over

Jan Roloff, Supportive Service - Appointments for:

2010

328 insurance claim assistance

18 help in obtaining Home Energy Assistance (HEAP) and Energy Credits

2 referrals for home repair

10 Golden Buckeye applications

47 financial assistance

23 agency referrals

Peggy Rupp, Escort Services

2010

103 persons escorted

26 volunteer drivers

32,834 miles driven in escorting to medical appointments, obtaining prescriptions, and other essential services

812 requests resulted in 744 trips

Laura Ankney, Housekeeping Program

2010

171 individuals received housekeeping for,

6,549.25 hours of service

44,421 miles traveled by housekeepers

Theresa Agyekum, Legal Aid of Western Ohio

2010

45 appointments for free legal assistance in Wauseon first Tues. 9:30—11:30 a.m.



Other services not listed above are referrals for Protective Services, Handicap Card Applications and general information.

Education and social programs are scheduled daily at all sites.

Grocery shopping and bill paying are scheduled once a week at all sites.

106,144 total miles were driven for meal delivery, escort, transportation to sites, etc. (this does not include any miles driven by volunteers in their own vehicles). One van is equipped with a lift for wheelchair clients. Forty-eight hour notice is required.

Exercise program (Golden Retrievers) is scheduled September thru May at the following locations:

Delta - Monday, Tuesday & Thursday at 10:00 a.m.

Wauseon - Monday & Wednesday at 10:00 a.m.

Archbold - Monday, Wednesday & Friday at 9:30 a.m.

Scheduling is made through the Fulton County Health Center, 419-335-2015, ext. 2300.

Blood pressure checks and blood sugar clinics are scheduled monthly by trained personnel. Volunteers through AARP were at the Center in Wauseon to assist Seniors with federal, state and city tax returns for 113 appointments.

THANK YOU FULTON COUNTY VOTERS for Making These Services Possible!

ARCHBOLD - Scout Cabin, Ruhley Park, 419-445-3590

Monday, Wednesday, and Friday, 10 a.m. - 2 p.m.

Jill Hale, Site Manager

2010

4,196 hot meals served to Seniors at the Site

8,295 hot meals delivered to Seniors in their homes in the Archbold area

327 hot meals delivered to Seniors in their homes in the West Unity area

DELTA - Memorial Hall, 419-822-3452

Tuesday and Thursday, 10 a.m. - 2 p.m.

Robbie Price, Site Manager

1,103 hot meals served to Seniors at the Site

7,600 hot meals delivered to Seniors in their homes in the Delta area

21 hot meals delivered to Seniors in their homes in the Liberty Center area



FAYETTE - Opera House, 419-237-1340

Tuesday and Thursday, 10 a.m. - 2 p.m.

Jill Hale, Site Manager

1,017 hot meals served to Seniors at the Site

1,771 hot meals delivered to Seniors in their homes in the Fayette area

SWANTON - 210 N. Main Street, 419-826-9776

Monday, Wednesday, and Friday, 10 a.m. - 2 p.m. Robbie Price, Site Manager

1,991 hot meals served to Seniors at the Site

5,951 hot meals delivered to Seniors in their homes in the Swanton area

1,581 hot meals delivered to Seniors in their homes in the Lyons area

1,370 hot meals delivered to Seniors in their homes in the Metamora area

WAUSEON Senior Center - 240 Clinton St., 419-337-9299 and 1-800-686-9217 Monday thru Friday, 8 a.m. - 4 p.m.

Sandra L. Griggs, Director

Connie Sperry, Activity Director

Kyle Wilcoxon, Head Cook/Kitchen Manager

10,975 hot meals served to Seniors at the Site

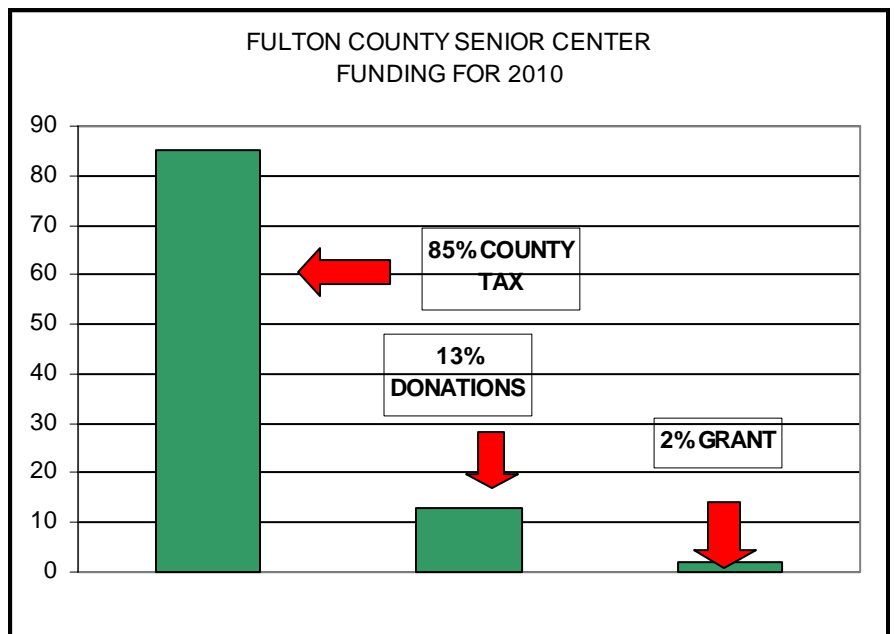
18,246 hot meals delivered to Seniors in their homes in the Pettisville/Wauseon area

TOTAL MEALS PREPARED

45,162 Home Delivered

19,282 Congregate

The Fulton County Senior Center Program of the Fulton County Board of Commissioners, funded through levy money, donations, and Title III-B grant, and ARRA funds administered by the Ohio Department of Aging and the Area Office of Aging.



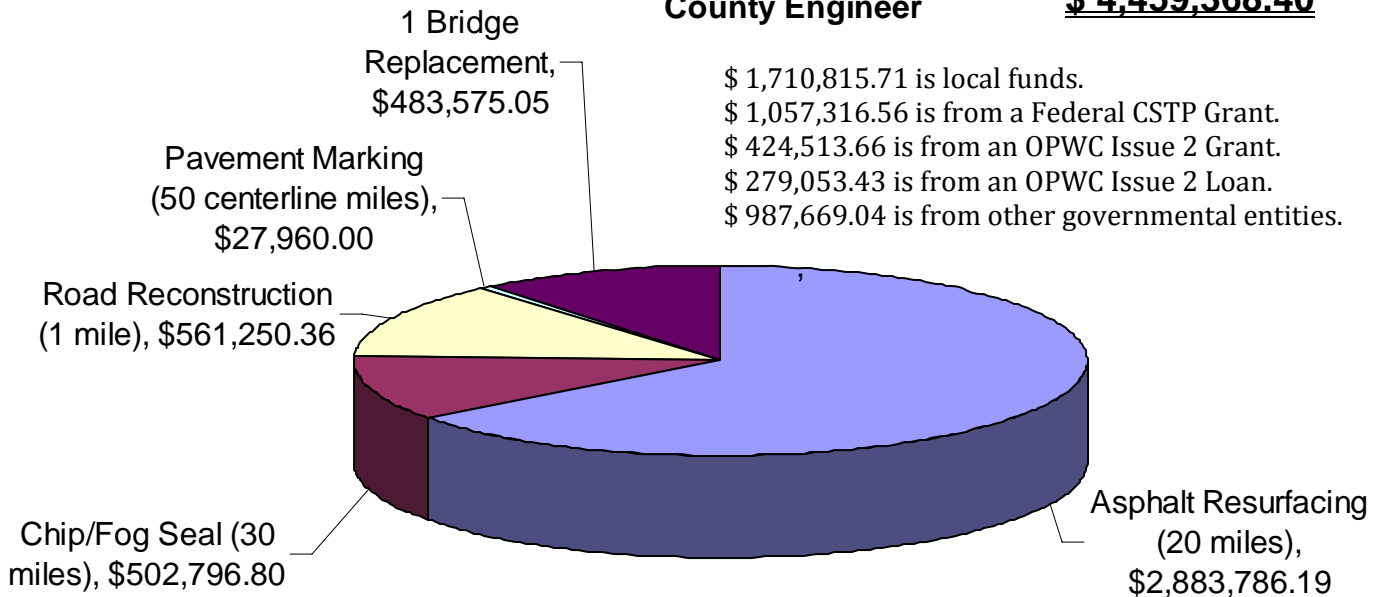


Engineer

2010 Construction Projects County Engineer

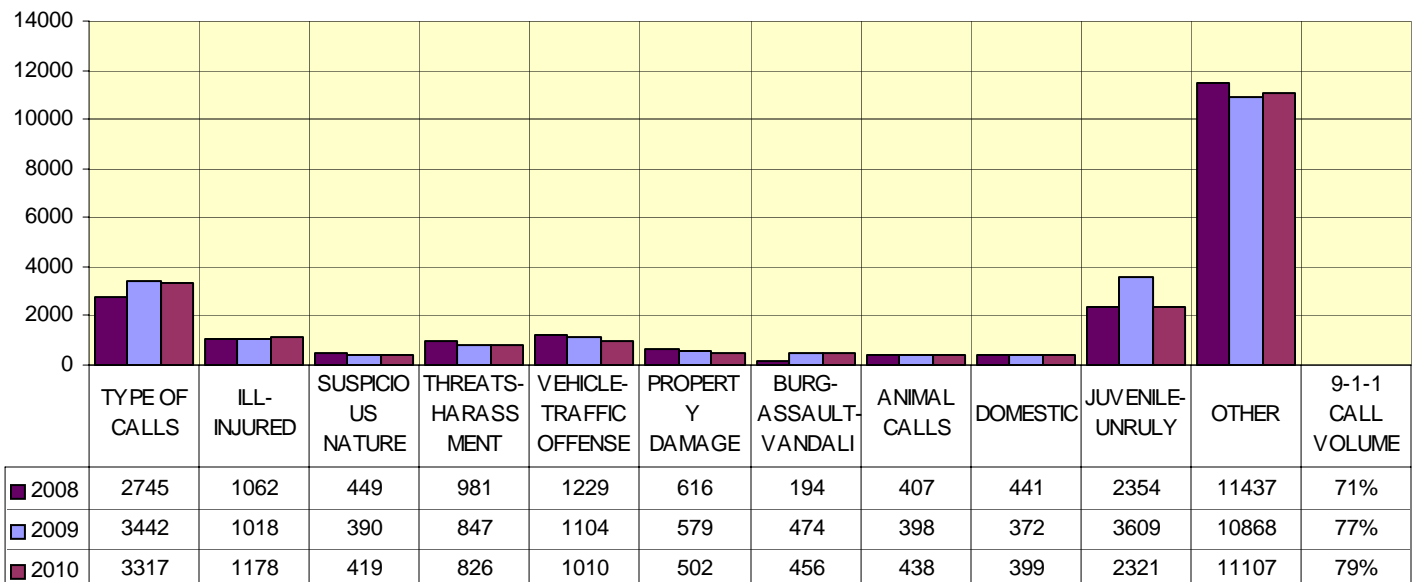
\$ 4,459,368.40

\$ 1,710,815.71 is local funds.
 \$ 1,057,316.56 is from a Federal CSTP Grant.
 \$ 424,513.66 is from an OPWC Issue 2 Grant.
 \$ 279,053.43 is from an OPWC Issue 2 Loan.
 \$ 987,669.04 is from other governmental entities.

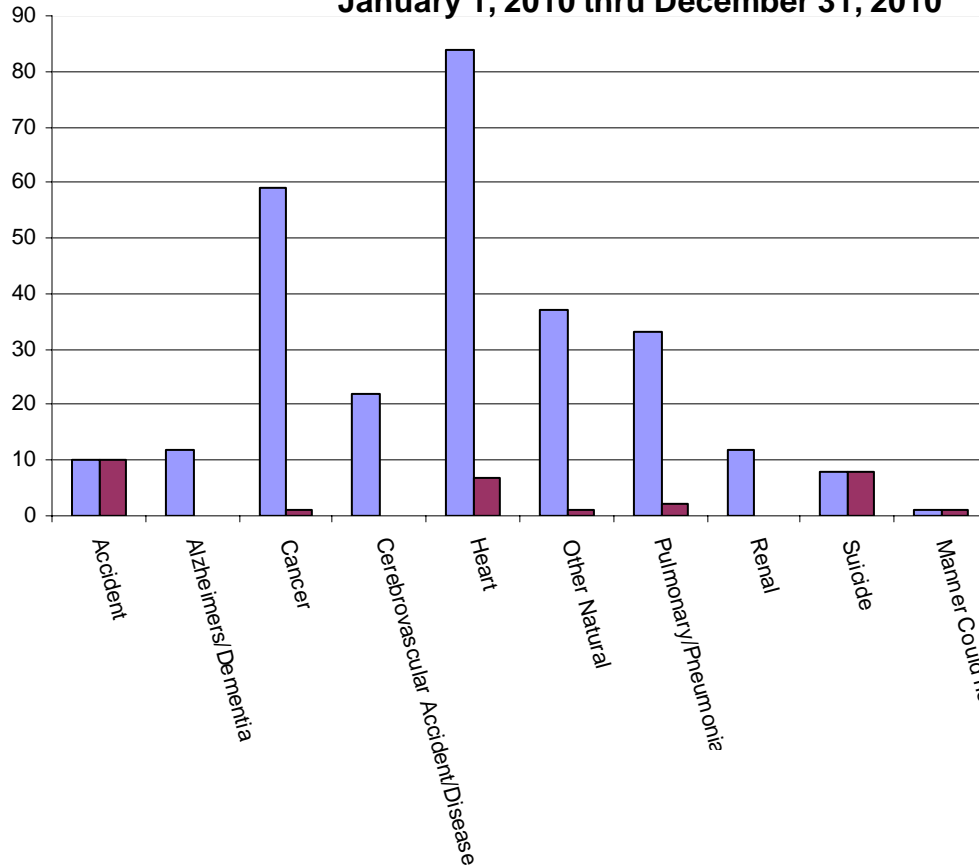


Sheriff

2006 - 2009 Sheriff Calls



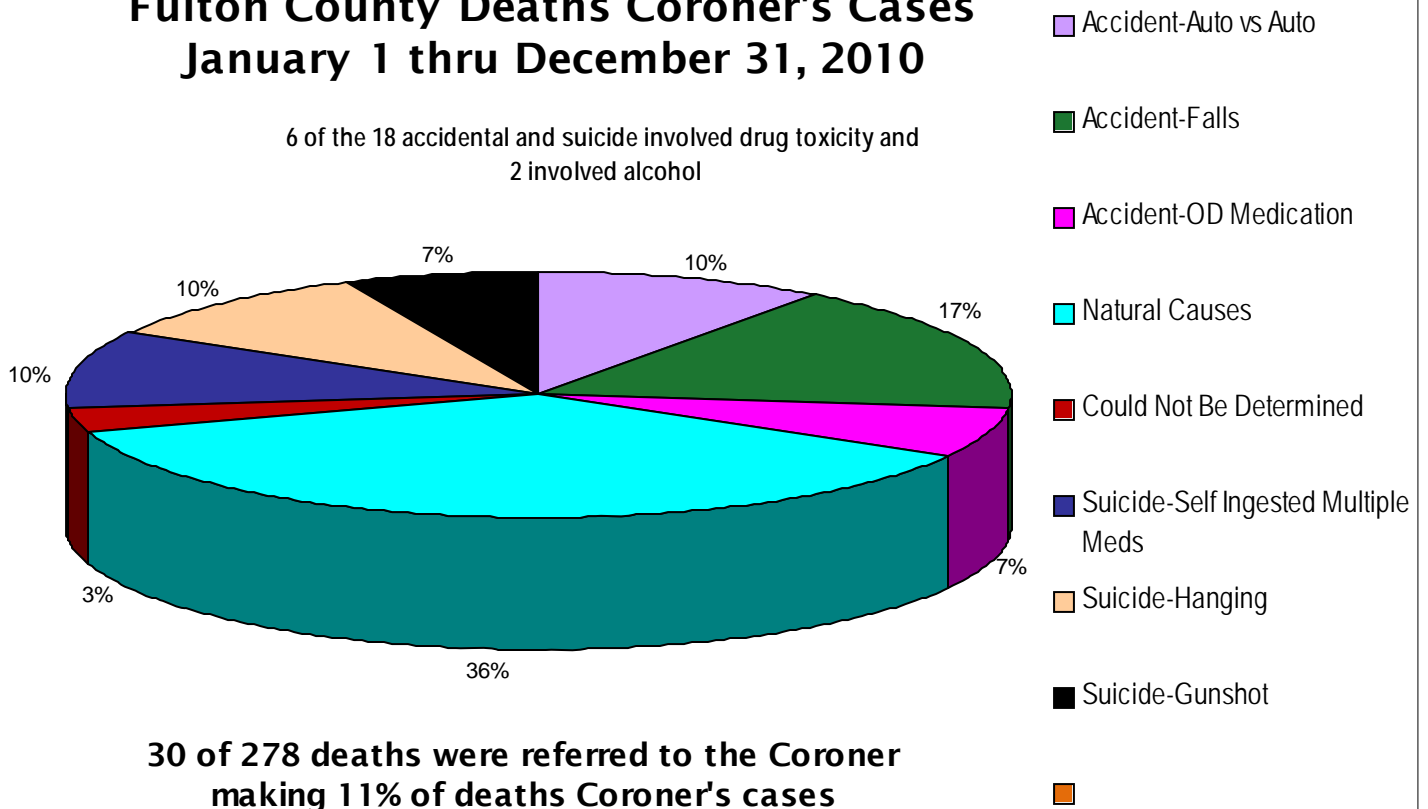
Fulton County Deaths January 1, 2010 thru December 31, 2010



**Total number
of deaths for
2010 = 278**

Fulton County Deaths Coroner's Cases January 1 thru December 31, 2010

6 of the 18 accidental and suicide involved drug toxicity and
2 involved alcohol

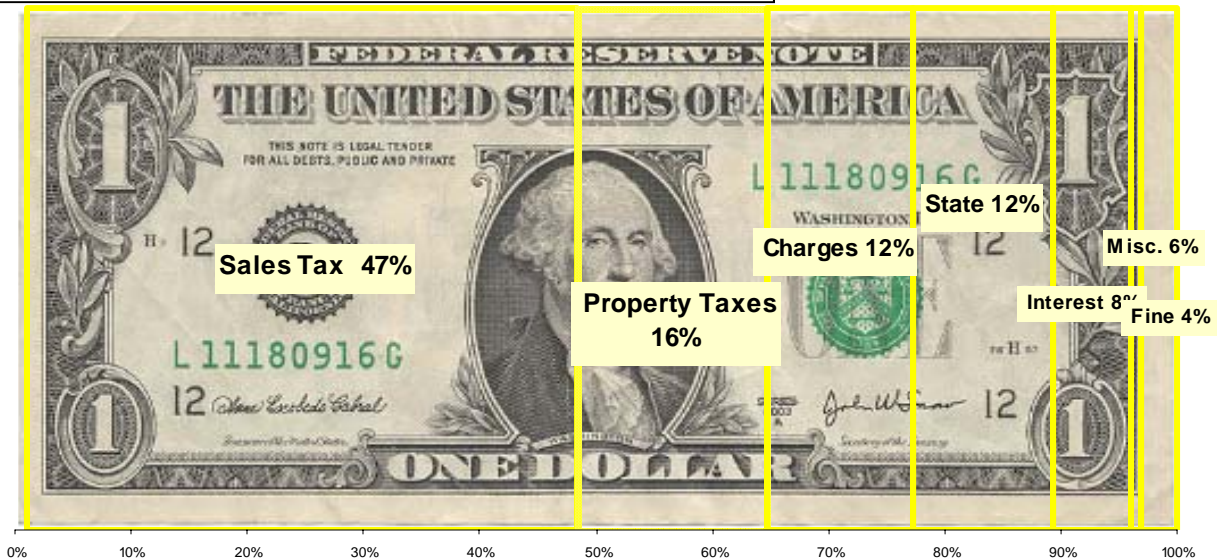




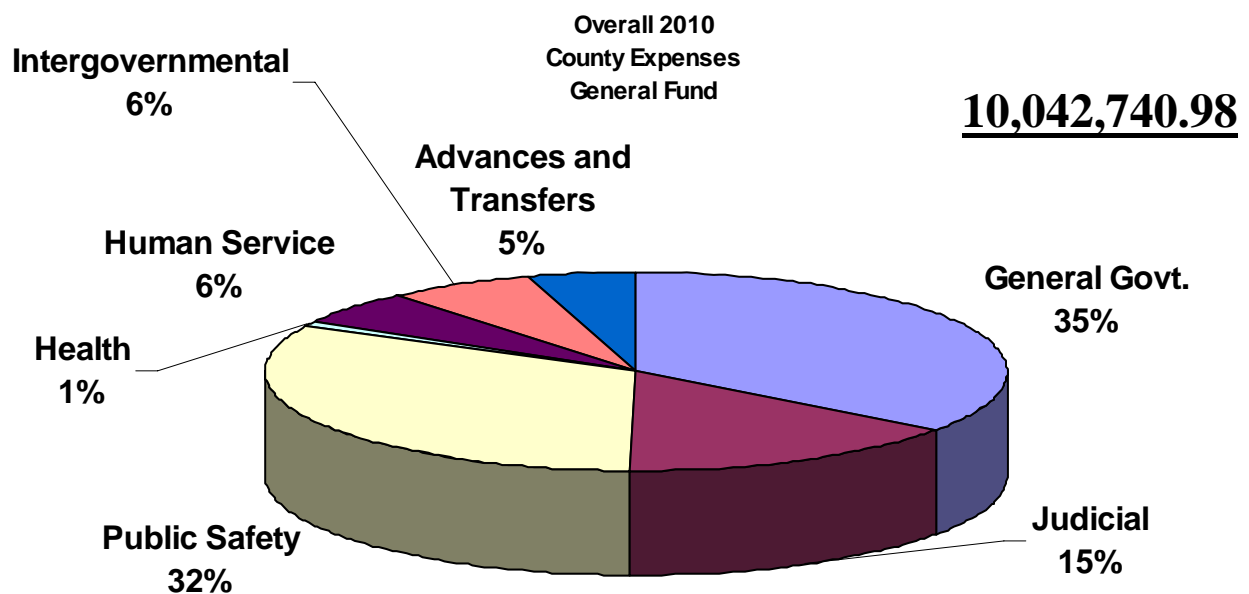
Revenues and Expenses in Detail

Where the Money Comes From

11,759,264.22



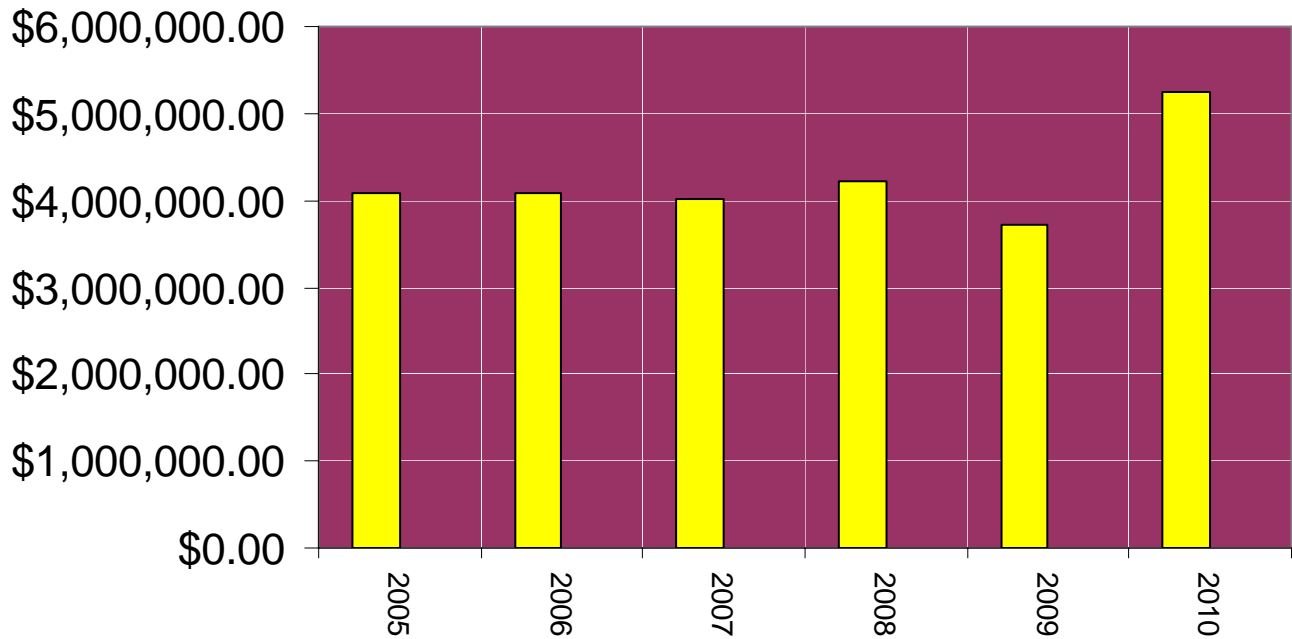
Where the Money Goes



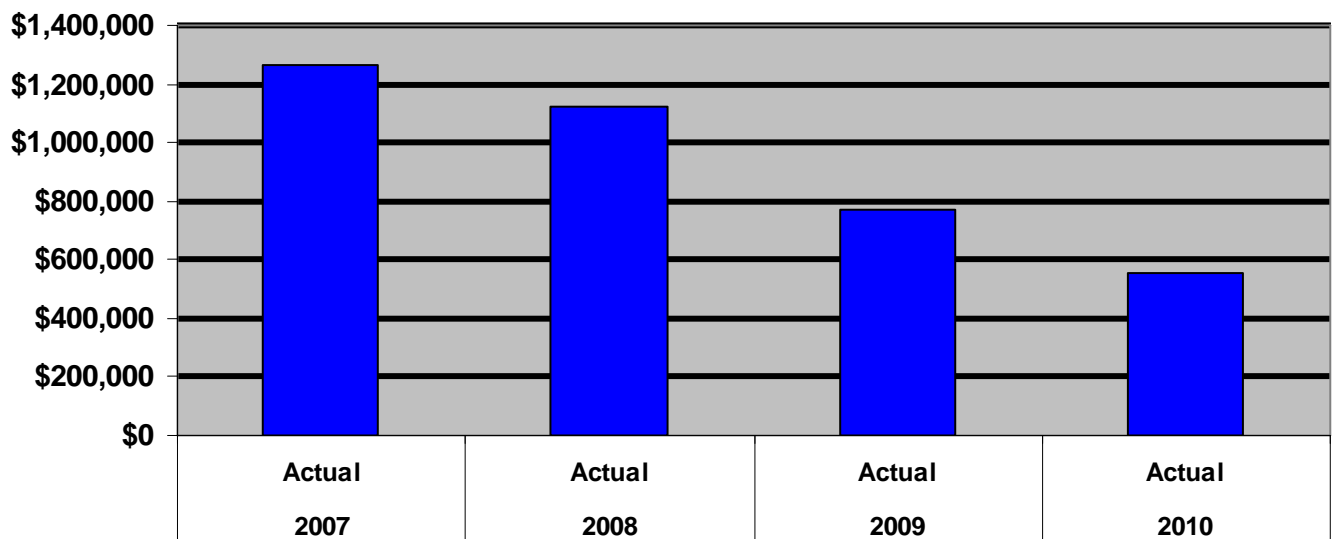


Investments and Sales Tax Collections

Sales Tax Collections



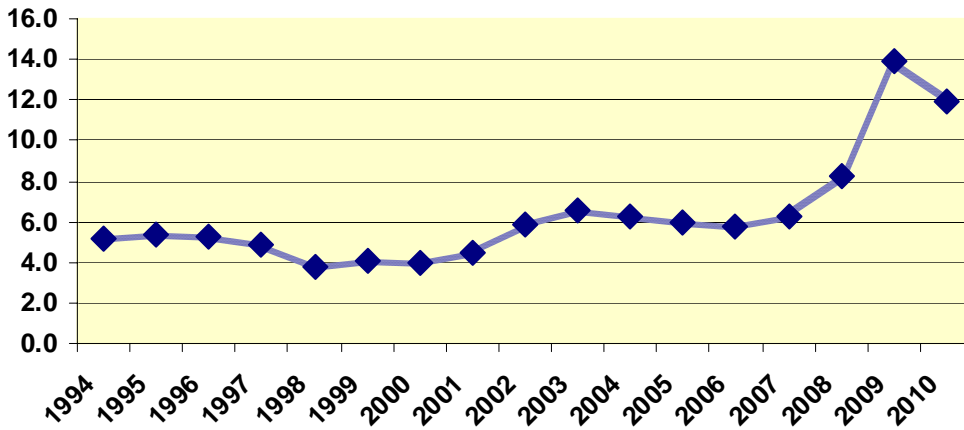
Interest Income





Fulton County Economic Indicators

FULTON COUNTY UNEMPLOYMENT HISTORY

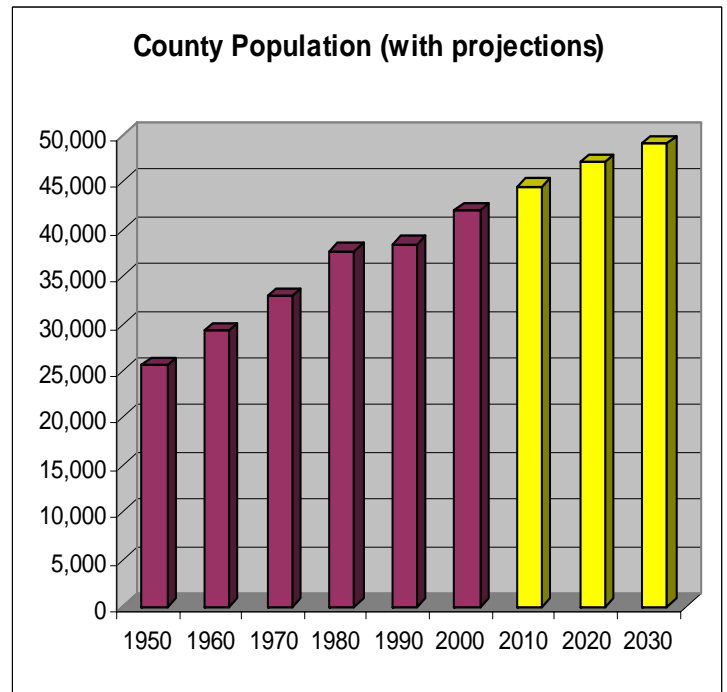


2010 County Unemployment by month

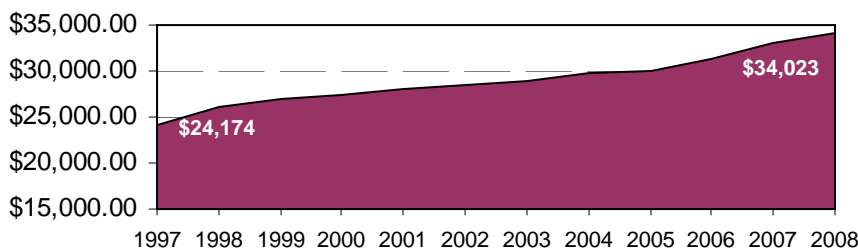
Month	Unemployment Rate (%)
Jan-10	16.0%
Feb-10	15.7%
Mar-10	14.4%
Apr-10	12.7%
May-10	11.8%
Jun-10	11.9%
Jul-10	11.5%
Aug-10	9.7%
Sep-10	9.6%
Oct-10	9.7%
Nov-10	9.9%
Dec-10	10.6%

Education	Number	%
Person over 25Yrs.	26,887	100%
No high school diploma	3,965	14.7%
High school Graduate	11,838	44.0%
Some college, no degree	5,660	21.1%
Associates degree	1,885	7.0%
Bachelor's degree	2,517	9.4%
Master's degree or higher	1,022	3.8%

Agriculture	
Land in farms (acres)	195,000
Number of farms	760
Average size (acres)	257
Total cash receipts	\$114,669,000



Per Capita Personal Income



FULTON COUNTY
Viam Inveniam Aut Faciam
(I will find a way or I will make one)

***Statistics from State of Ohio

Fulton County Commissioners

Wauseon, OH 43567

PRSR STD
U.S. POSTAGE
PAID
WAUSEON, OH
PERMIT NO. 39



Your County Government

- | | |
|---|--------------------------------------|
| Adult Probation.....337-9236 | Highway Department.....335-7052 |
| Airport.....335-3993 | Juvenile Probation.....337-9244 |
| Auditor.....337-9200 | Educational Serv. Ctr.567.444.4800 |
| Board of Disabilities.....337-4575 | OSU Extension337-9210 |
| Elections.....335-6841 | Probate Court.....337-9242 |
| Bureau of Motor Vehicles | Prosecuting Attorney.....337-9240 |
| (Ohio).....335-8808 | Recorder.....337-9232 |
| Clerk of Courts – Legal.....337-9230 | Regional Planning337-9214 |
| -Auto Title.337-9204 | Sanitary Engineer.....337-9263 |
| Common Pleas Court.....337-9260 | Senior Center.....337-9299 |
| County Commissioners....337-9255 | Sheriff's Department.....335-4010 |
| County Court - Eastern ...826-5636 | Soil & Water Conservation |
| County Court – Western...337-9212 | Dist.....337-9217 |
| Job & Family Services.....337-0010 | Transfer Station.....337-9250 |
| Dog Pound.....337-9219 | Treasurer.....337-9252 |
| Drivers Examination.....385-6479 (Toledo) | United Way of Fulton |
| Economic Development....337-9215 | County.....337-9606 |
| EMA/EMS337-9207 | Veterans Service Office.....337-9266 |
| Engineer.....335-3816 | Workforce Development...337-9215 |
| Fairgrounds.....335-6006 | |
| GED.....337-9604 | |
| GIS - Global Information | |
| System.....337-9605 | |
| Health Department, W.I.C., 337-0915 | |

For E-mail addresses, refer to
www.fultoncountvoh.com
to look up by department if available